

# **The Lake Lothing (Lowestoft) Third Crossing Order 201[\*]**

---



Lake Lothing  
**THIRD  
CROSSING**

---

## **Document SCC/LLTC/EX/159: Environmental Statement Volume 2 Figures 9.1, 9.3 and 9.4**

---

**Planning Act 2008**

**The Infrastructure Planning (Applications: Prescribed Forms and Procedure)  
Regulations 2009**

**The Infrastructure Planning (Examination Procedure) Rule 2010**

PINS Reference Number: TR010023

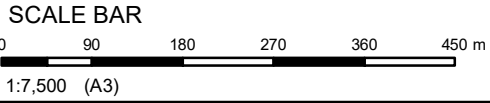
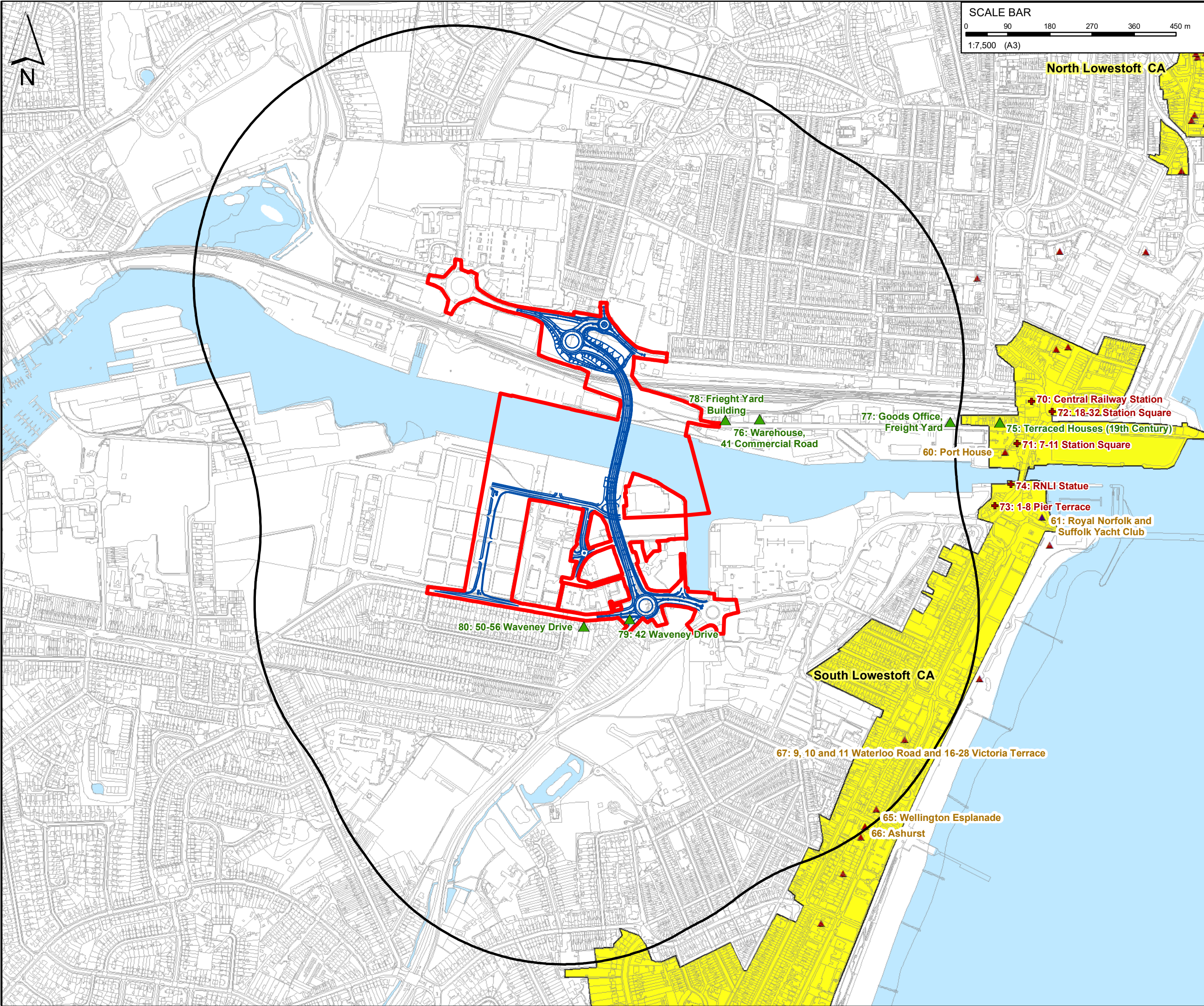
Author: Suffolk County Council

Document Reference: SCC/LLTC/EX/159

Date: May 2019

*This page is intentionally left blank*






- KEY**
- Order Limits
  - The Scheme (illustrative)
  - 500m Study Area
  - Conservation Area
  - Listed Building**
  - Grade
    - II
    - II\*
  - Locally Listed Buildings
  - Local Interest Buildings


Mapping reproduced by permission of Ordnance Survey on behalf of HMSO.  
© Crown copyright and database rights 2017. All rights reserved.  
Ordnance Survey licence number 100023395  
Contains OS data © Crown copyright and database rights 2017.

P01	DH	HR	JB	11/04/2019
ORDER LIMITS REVISED & DESIGN AMMENDMENTS				
P00	IW	HR	MD	11/05/2018
ORDER LIMITS REVISED & MINOR AMENDMENTS				
REVISION	DRAWN	CHECKED	APPROVED	DATE
DESCRIPTION				



**Suffolk**  
County Council

PROJECT TITLE



Lake Lothing  
**THIRD CROSSING**

DRAWING TITLE

Built Heritage Assets  
Figure 9.1

DRAWING STATUS

For DCO Examination

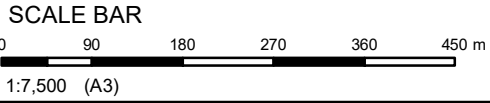
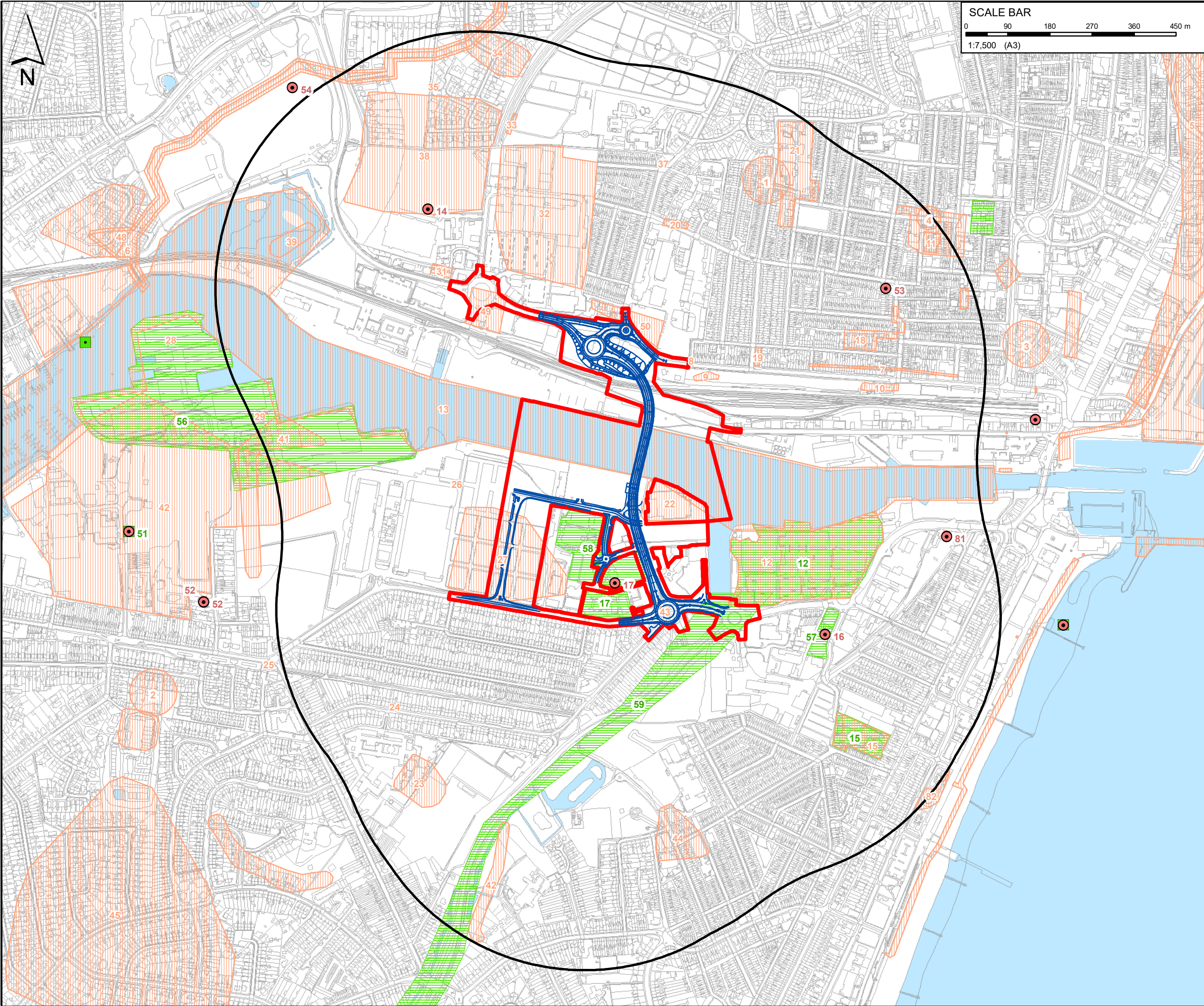
DRAWN	CHECKED	APPROVED	AUTHORISED	SUITABILITY
DH	HR	HR	JB	S4

SCALE @ A3 SIZE	DATE	REVISION
1:7,500	11/04/2019	P01

DRAWING NUMBER

Project	Originator	Volume	
1069948-WSP-EHR-LL_C19-SK-LH-0001			
Location	Type	Role	Number






- KEY**
- Order Limits
  - The Scheme (illustrative)
  - 500m Study Area
  - Non Statutory Heritage Assets**
    - Heritage Monuments (Point)
    - Heritage Events (Point)
    - Heritage Monument (Region)
    - Heritage Event (Region)


Mapping reproduced by permission of Ordnance Survey on behalf of HMSO.  
© Crown copyright and database rights 2017. All rights reserved.  
Ordnance Survey licence number 100023395  
Contains OS data © Crown copyright and database rights 2017.

P01	DH	HR	JB	11/04/2019
ORDER LIMITS REVISED & DESIGN AMMENDMENTS				
P00	IW	HR	MD	11/05/2018
ORDER LIMITS REVISED & MINOR AMENDMENTS				
REVISION	DRAWN	CHECKED	APPROVED	DATE
DESCRIPTION				



**Suffolk**  
County Council

PROJECT TITLE



Lake Lothing  
**THIRD CROSSING**

DRAWING TITLE

Non Designated Heritage Areas  
Figure 9.3

DRAWING STATUS

For DCO Examination

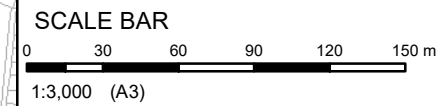
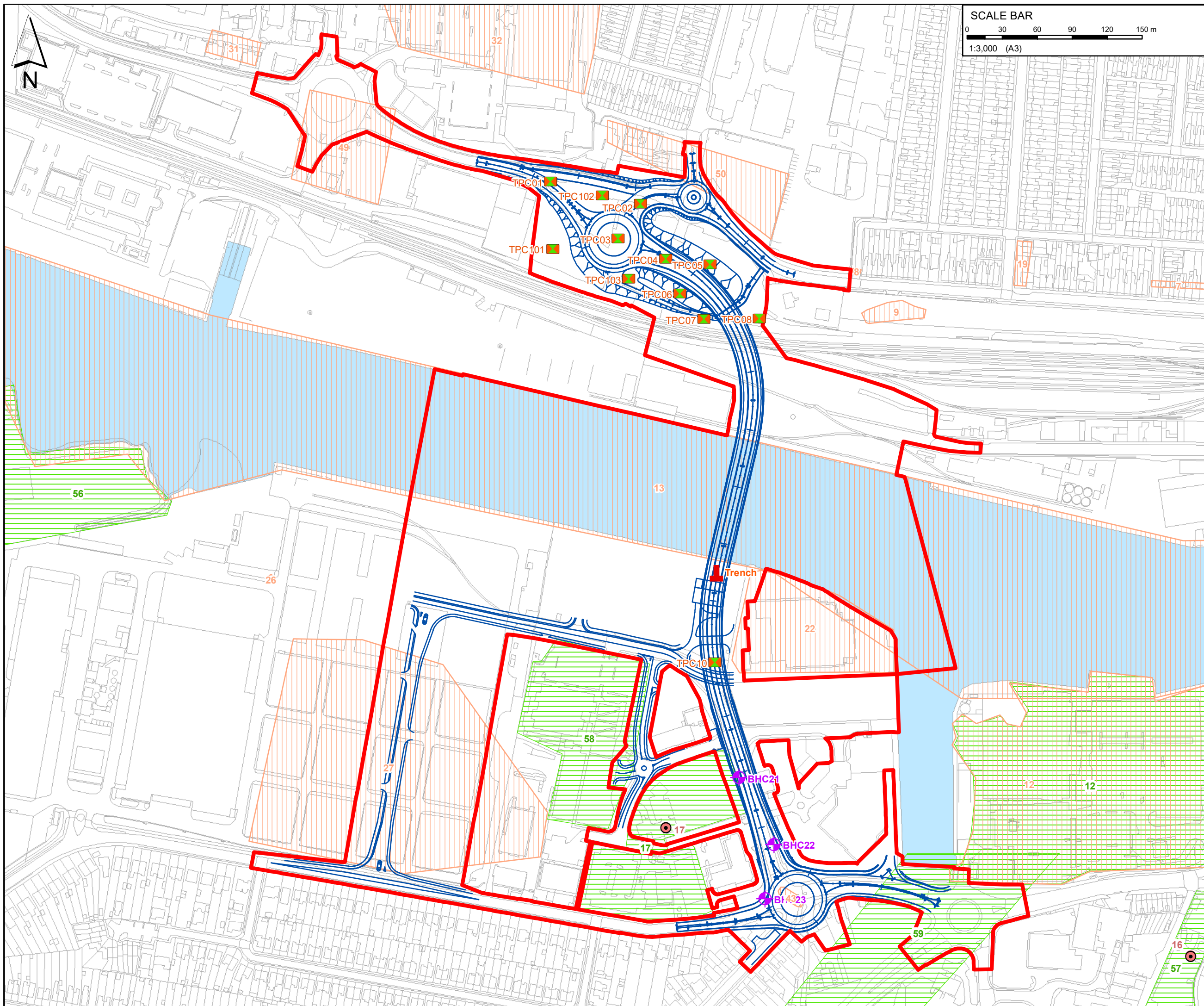
DRAWN	CHECKED	APPROVED	AUTHORISED	SUITABILITY
DH	HR	HR	JB	S4

SCALE @ A3 SIZE	DATE	REVISION
1:7,500	11/04/2019	P01

DRAWING NUMBER

Project	Originator	Volume
1069948-WSP-EHR-LL_C19-SK-LH-0003		
Location	Type	Role
		Number





## KEY


## Order Limits

— The Scheme (illustrative)

### Non Statutory Heritage Assets

- Heritage Monuments (Point)


- Heritage Events (Point)

 Heritage Monument (Region)

 Heritage Event (Region)

### GI Sampling Locations

 Onshore Exploratory Hole Trial Pit

 Trial Trench

Mapping reproduced by permission of Ordnance Survey on behalf of HMSO.  
© Crown copyright and database rights 2017. All rights reserved.  
Ordnance Survey licence number 100023395  
Contains OS data © Crown copyright and database rights 2017.

P01	DH	HR	JB	11/04/2019	
ORDER LIMITS REVISED & MINOR AMENDMENTS					
P00	IW	HR	MD	11/05/2018	
ORDER LIMITS REVISED & MINOR AMENDMENTS					
REVISION	DRAWN	CHECKED	APPROVED	DATE	
DESCRIPTION					



PROJECT TITLE

Lake Lothing  
**THIRD  
CROSSING**

DRAWING TITLE

GI Sampling Locations Subject to  
Archaeological Watching Brief  
Figure 9.4

**DRAWING STATUS**  
For DCO Examination

DRAWN	CHECKED	APPROVED	AUTHORISED	SUITABILITY
DH	HR	HR	JB	S4

SCALE @ A3 SIZE	DATE	REVISION
1:3,000	11/04/2019	P01

DRAWING NUMBER			
Project	Originator	Volume	
1069948-WSP-EHR-LL_C19-SK-LH-0004			
Location	Type	Role	Number